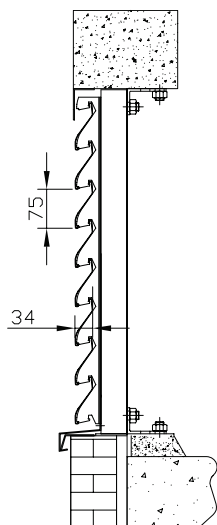




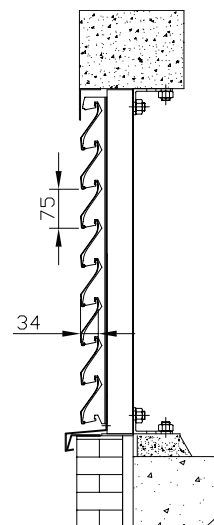
DucoWall Basic W 35S/Z

The DucoWall Basic W 35S/Z series is a continuous louvre wall designed to clip directly onto the support system with the Duco patented Direct Clip system. The special blade shape has been designed for both S and Z shape applications. This system is ideally suited for projects where the primary function of the continuous blade louvre is to offer an effective cosmetic covering ("screening"). This system is often used on projects as a screening louvre.

→ Basic W 35S



→ Basic W 35Z



Technical specifications

Louvre blade pitch :	75 mm
Blade depth :	35 mm
Depth to fit :	
40/47 support mullions :	51 mm
21/73 support mullions :	78 mm
40/102 support mullions :	107 mm
Visual free area :	69%
Physical free area :	27%
Maximum span between 2 mullions :	1,650 mm

Type of mullion :

40/47 (light)
21/73 and 40/102 (heavy)

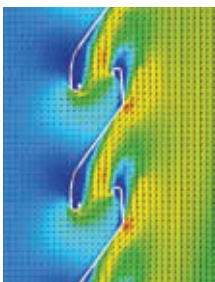
For an overview of the mullions that are available : See fold-out page at the back of this brochure.



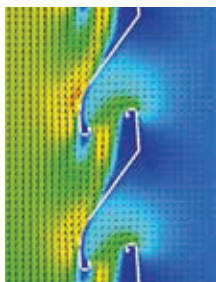
The Duco Wall **Basic** series is particularly suited for "screening purposes".

EFD simulation

IN



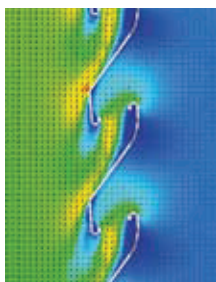
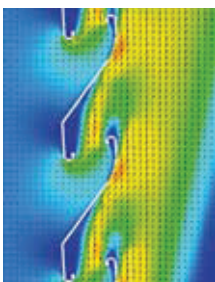
OUT



W 35S

K-factor
Intake : 43.56
Ce: 0,15

K-factor
Exhaust : 46.63
Cd: 0,15



W 35Z

K-factor
Intake : 50.02
Ce: 0,14

K-factor
Exhaust : 41.01
Cd: 0,16